



Appel à propositions de recherche *Trajectoires vers la durabilité*

Engagement des jeunes chercheurs africains

Dr. Anne-Hélène PRIEUR-RICHARD

Agence Nationale de la Recherche, France

Mandat

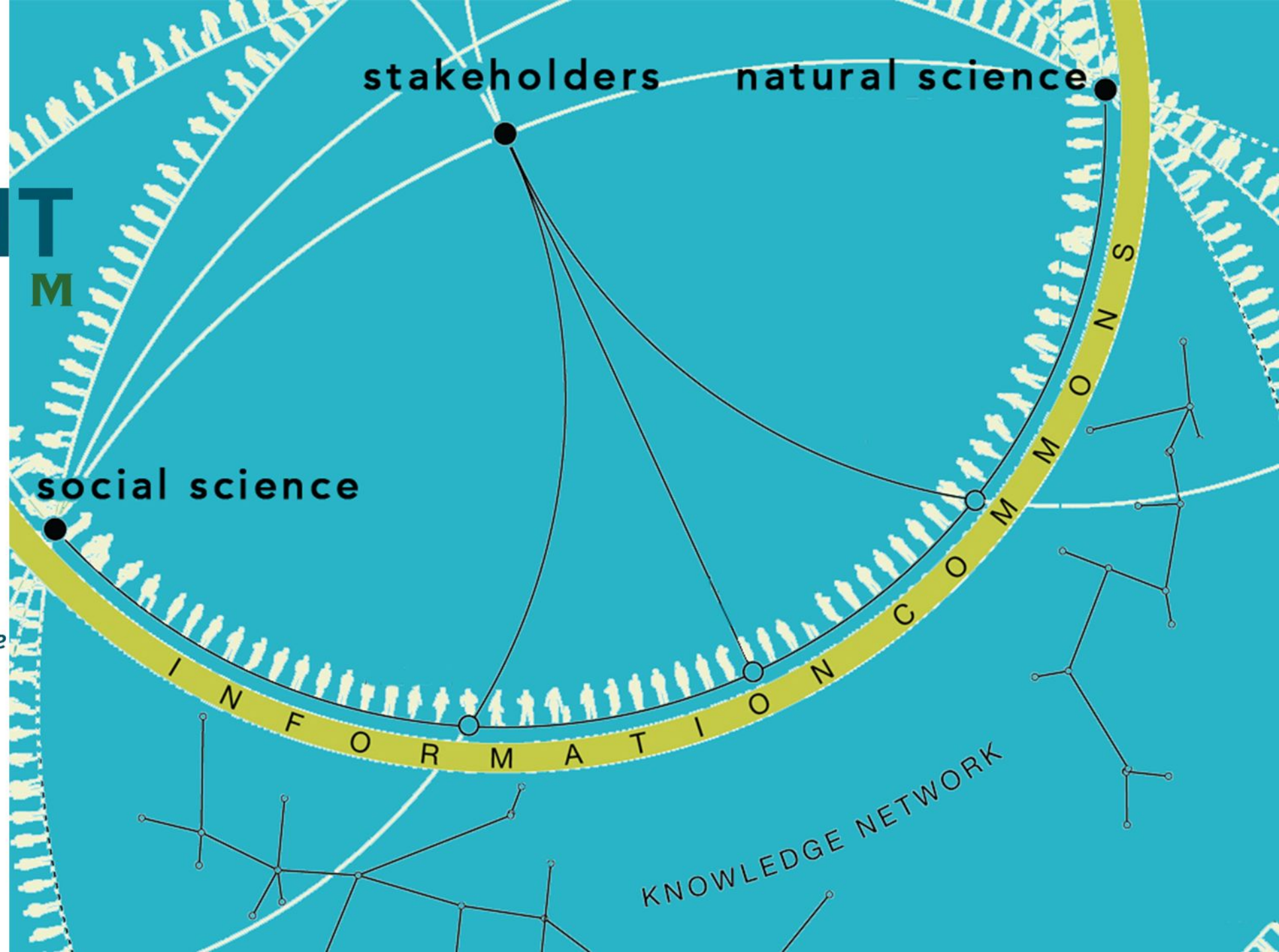
- **Groupe de financeurs internationaux de la recherche sur le changement global**
- **Objectif:** accélérer la production de la recherche sur l'environnement en vue de supprimer les barrières à la durabilité via l'alignement & la mobilisation de ressources internationales
- **Principe directeur** des Actions de Recherche Collaboratives (Collaborative Research Actions-CRAs) du Belmont Forum: *the Belmont Challenge* :

BELMONT FORUM CHALLENGE

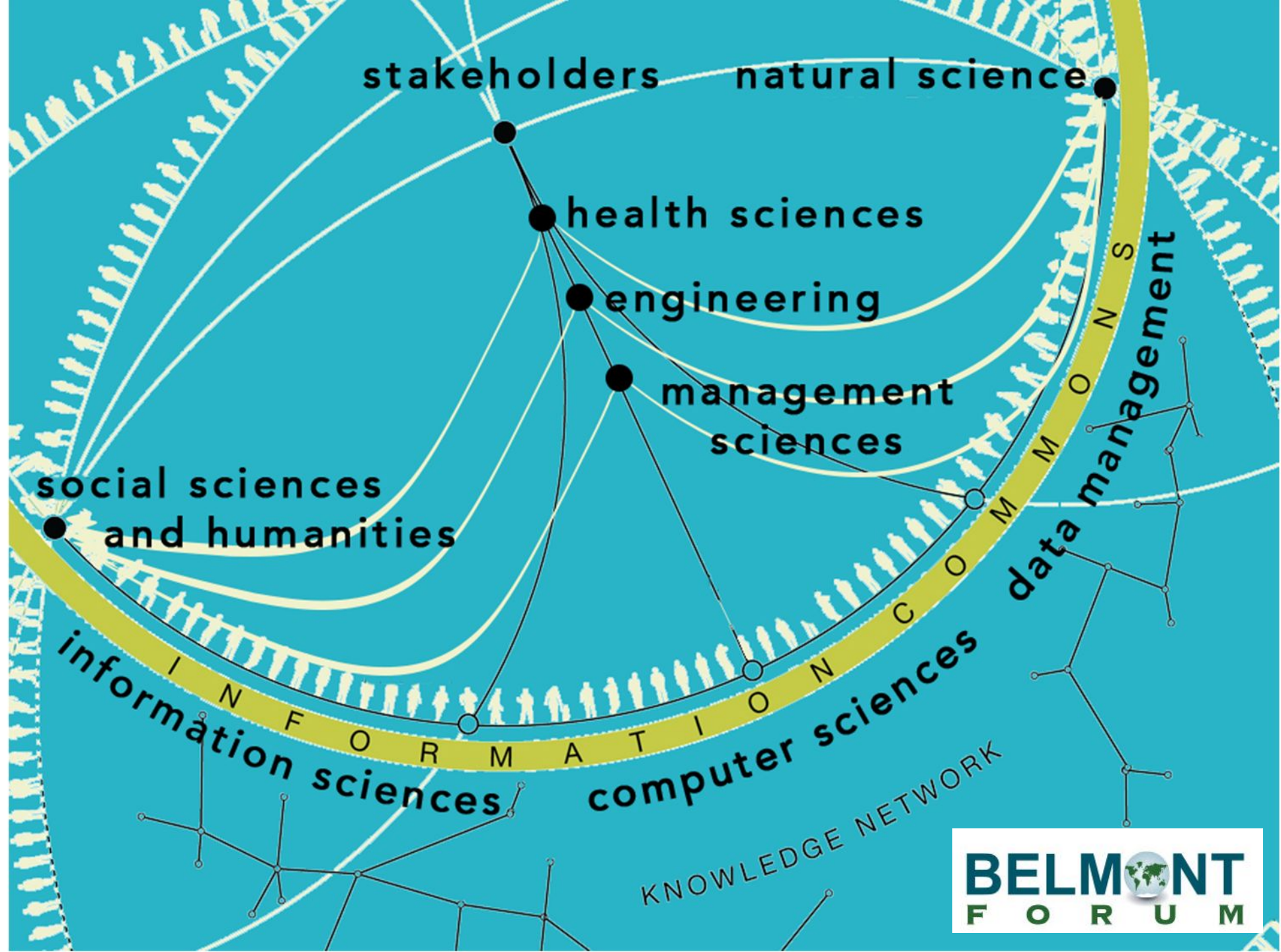


providing knowledge for understanding, mitigating, and adapting to global environmental change

- > *Transdisciplinary*
- > *Transnational*



- Travailler entre les domaines de connaissances
- Engager les experts académiques & les acteurs de la société
- Accroître l'utilisation des résultats de la recherche via la co-construction
- Soutenir les approches système
- Encourager la mise en œuvre, l'action, la réutilisation des connaissances





Developing opportunities with more than 125 resource organizations



L'approche transdisciplinaire

- Répondre à des besoins communs – scientifique & sociétaux
- Collaboration entre disciplines
- Collaboration entre secteurs

BELMONT FORUM MODEL:



■ Social Scientists ■ Natural Scientists ■ Policy makers ■ Stakeholders

2019 - 10 ans !



17 Collaborative Research Actions

more than **75** million € awarded
to **92** projects

partnering with more than **100**
resource providers

engaging more than **1000**
participants in more than **35**
countries



Open

- Soils & Groundwater for Society
- Pathways to Sustainability

In Scoping

- Migration
- Beyond the Paris Agreement

In preparation

- Sustainable Consumption



Autres activités - Science ouverte

- Politique sur l'ouverture des données : Les données doivent être:
 - Faciles à trouver
 - Accessibles
 - Interopérables
 - Réutilisables
- Module de formation Gestion des données
- Boite à outils Gestion des données sur le site web



Autres activités - Développement de la communauté & des capacités, valorisation

- Formations

- Transdisciplinarité
- Gestion de données pour une science ouverte



- Activités de valorisation

- Créer une communauté & augmenter la valeur ajoutée du Belmont Forum e.g., workshop de valorisation, Conférence SRI2021
- Collaboration avec les groupes de travail sur les métriques pour l'évaluation des projets transdisciplinaires


Sustainability Research & Innovation Congress 2021
12-15 June, 2021 – Brisbane, Australia

<https://sri2021.org/>

- Groupe de travail sur les bonnes pratiques

Belmont Forum: faire la différence


Haute qualité des produits scientifiques



ARTICLE
Received 2 Sep 2015 |

Differences explained layer by layer


Richard Davy¹ & Ig



Sustainability Science
July 2016, Volume 11, Issue 4, pp 591–609 | [Cite as](#)

A conceptual framework for analyzing deltas as coupled social–ecological systems: an example from the Amazon River Delta

Authors [Authors and affiliations](#)

Eduardo S. Brondizio , Nathan D. Vogt, Andressa V. Mansur, Edward J. Anthony, Sandra Costa, Scott Hetrick

Special Feature: Original Article Sustainable Deltas: Livelihoods, Ecosystem Services, and Policy Implications
First Online: 23 May 2016

1.3k Downloads
15

Coopération internationale



Mesures pour l'évaluation de la recherche transdisciplinaire



Développement de la communauté sur la durabilité



Communication & engagement des acteurs & communautés

Communication and engagement

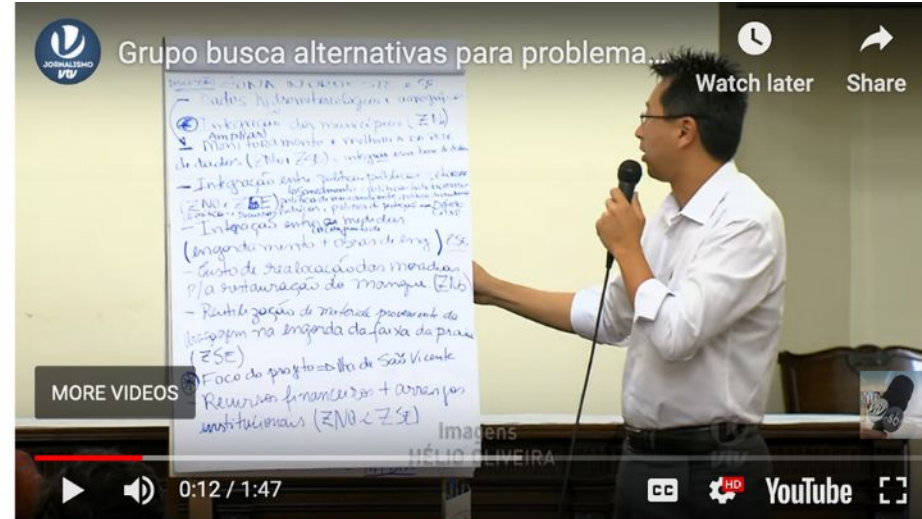


Securing Food for Millions in Cambodia | Field Chronicles: Tonle Sap - Conservation International

24,644 views • May 30, 2014

154 3 SHARE SAVE ...

- blogs
- youtube
- local news
- e-zines
- twitter
- intl papers
- interviews
- art
- theatre
- dance



New East network Cities

Slow-motion wrecks: how thawing permafrost is destroying Arctic cities

Cracking and collapsing homes are a growing problem in cities such as Norilsk in northern Russia. As climate change accelerates the problem, what can be done to maintain the resource-rich hubs the country relies on?



Tapping Traditional Wisdom to Cope with Climate Change

From the mountains of Tajikistan to Standing Rock in the Dakotas, scientists are collaborating with indigenous people to study climate change and predict the future.



Merci pour votre attention

BELMONT
FORUM
Pathways to Sustainability



What will your greatest added value be?

new food systems
Awareness new supply chains
Enhanced knowledge Interconnected technology
Profitability management guidelines resource efficiency
new supply chains Network development Education
Community support co creation Economic empowerment
Security Scholar exchange Management
sustainability design Stakeholder Engagement
Collaborative development Scalability
sectoral integration
Policy Web services reducing impacts
data visualization Translation
Decision support Marketability Digital Health Systems
Cross sector governance Synthesis Best practices
self sufficiency Transdisciplinary training public buy in
Preventative measures Technology Transfer quality of life
International partnerships Resilience
identifying gaps

RACArctic

WASTE FEW ULL
WASTE: FOOD - ENERGY - WATER URBAN LIVING LABS

AlienScenarios

TAPESTRY



Arctic-Biodiver



BIOESSHEALTH



COPERA



BAAMRGP



FATE

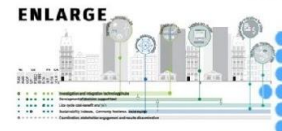
CLIMTREE

Arctic-ERA

HIARC

CONNECT

AFV



WILDHEALTH



Future Bird Scenarios

CON-VIVA

SECBIVIT



TSUNAGARI

PARSEC

THESIS



OBServ

SALBES

JWP



ACCEDE

LimnoScenES



T2GS

SALBES

JWP

PACMEDY InterDec

METABOLIC

SMARTS2



TRUEPATH



SAHEWS



TLSCC



IFWEN

SOMBEE

FUTURAGUA

BONDS

Balancing biodiversity conservation with Development in Amazonian wetlands

AGENTS



FICESSA

Food Security Impacts of Industrial Crop Expansion in Sub-Saharan Africa

SAFGOV

Minex

Reason for the food energy water nexus

IHDBS

Farms4 Biodiversity



WWW.PIC



Reef-FUTURES

ABC Telecoupling



XINGU



MAGIC

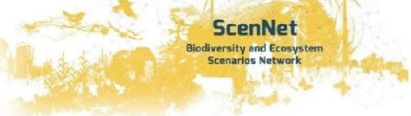
WWW.PIC

CITYFOOD

SEAVIEW

GLO CULL

URBAN LIVING LABS



ARTISTICc

Adaptation Research, a Trans-disciplinary transnational community and policy centred approach



SecTenSusPeace

driver



Waterproofing Data



Building the field

Transdisciplinarity

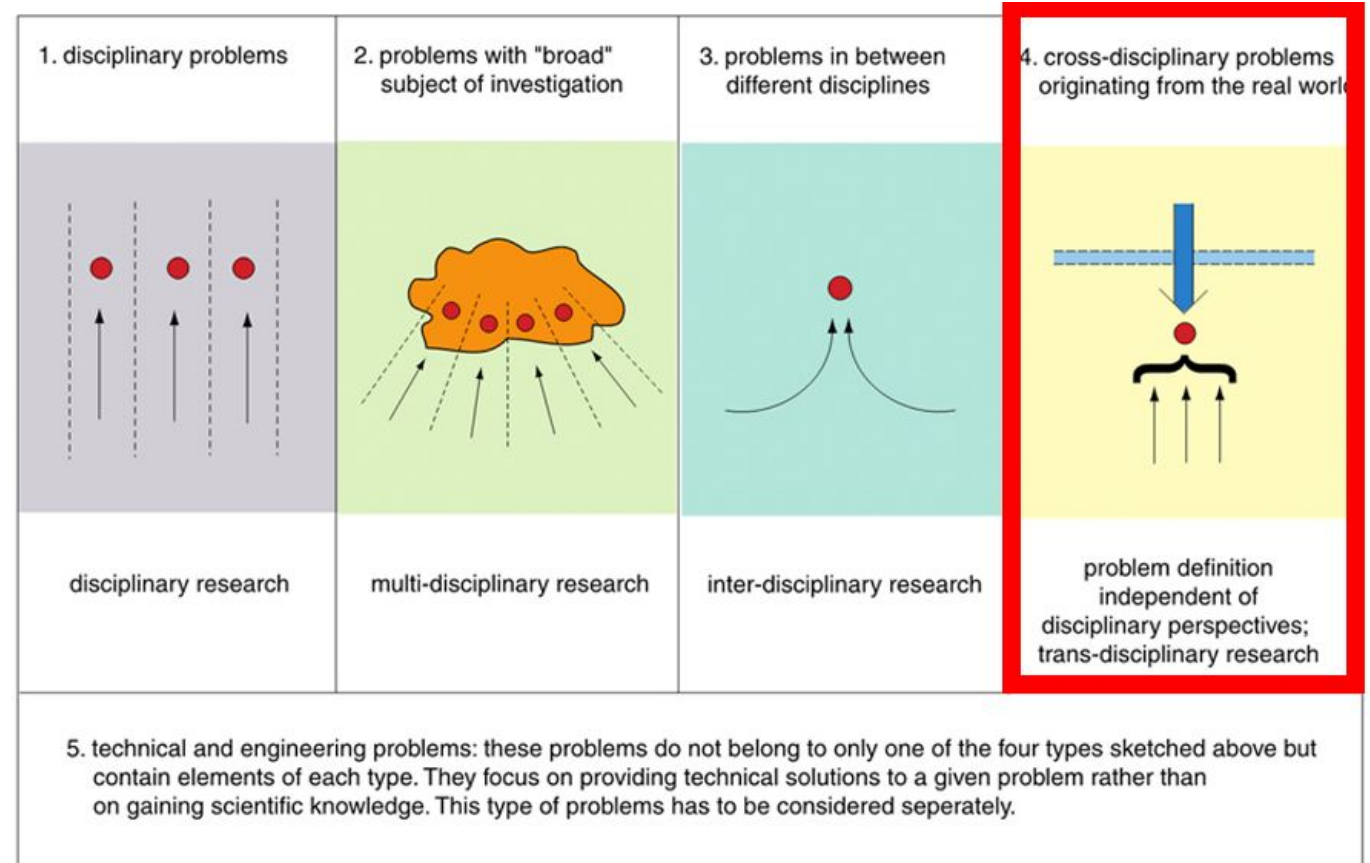
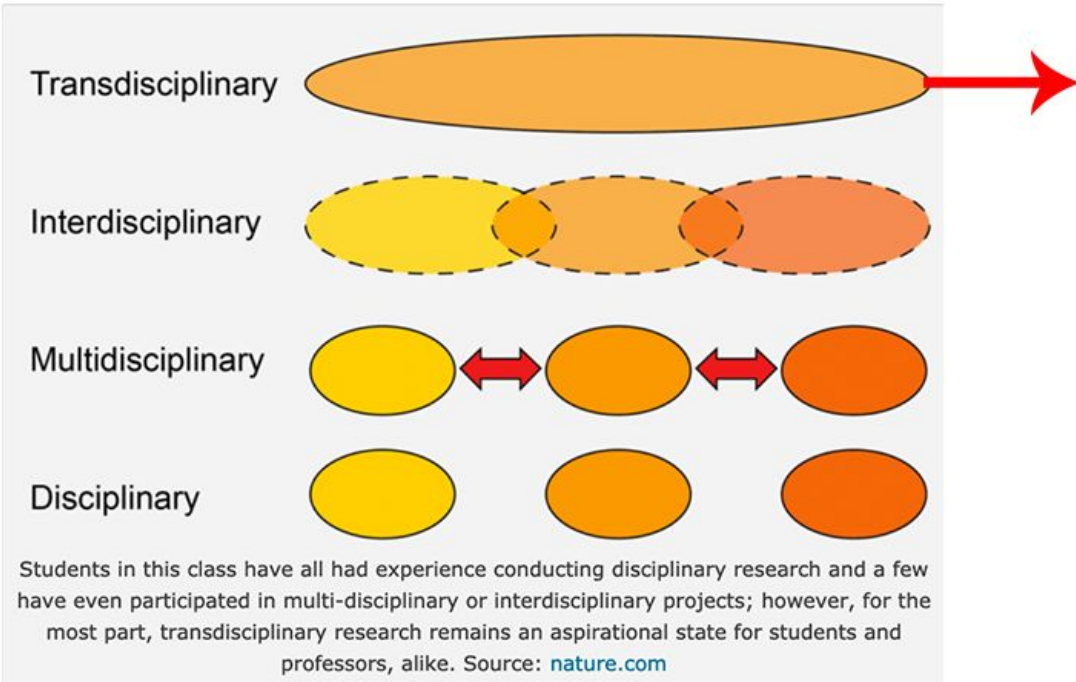


Figure 1: Definition of five types of scientific problems and distinction of transdisciplinary research from inter- and multidisciplinary research. —→ : discipline, ● : scientific problem, ----- : boundaries between disciplines, - - - - - : boundary between scientific system and "real world". [1]